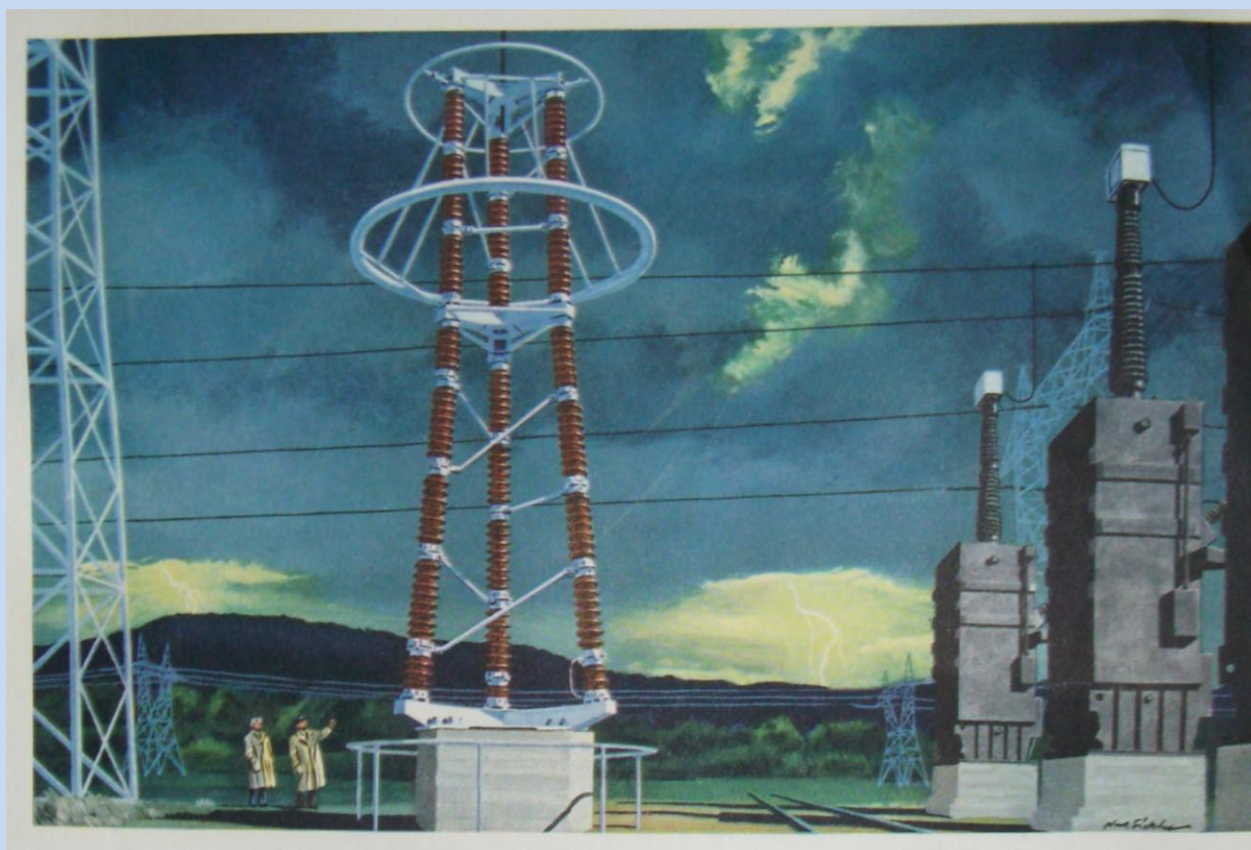


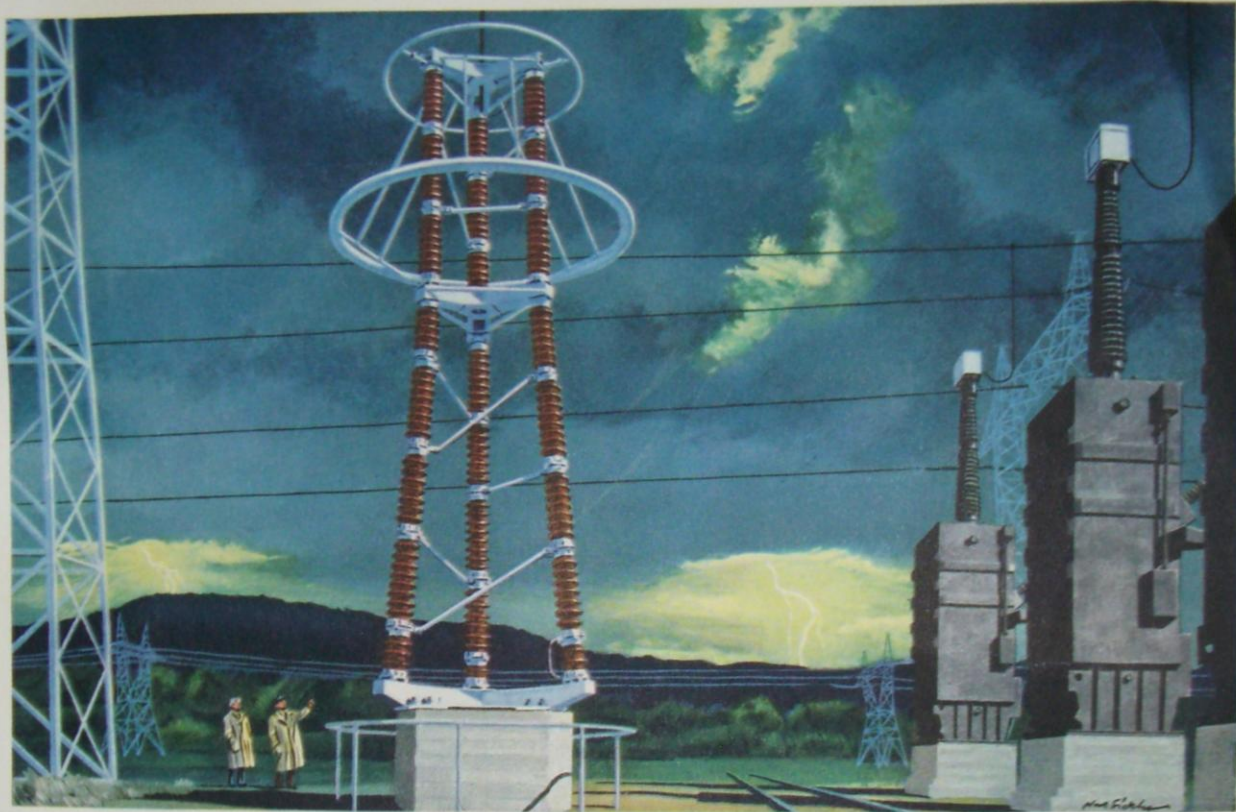


1949 Westinghouse 500kV Arrester of the Future

This photo comes from an ad on the inside of the front cover of Fortune Magazine (January 1949). It is an artist rendition of an arrester to be used on the "Great New Electrical Highway" that was apparently in the design state in 1949. The article says that the new system was two times higher than any existing system at that time. They call it a "Half-Million Volt Traffic Cop", an interesting way of saying a "500kV Arrester". It appears like a parallel column arrester, but with closer examination, it can be seen that the columns are not electrically in parallel and instead in series-parallel. It looks like they were able to reduce the height of the arrester by 20% using this configuration. Assuming the men are 6 ft tall, this arrester looks like 50ft tall.



YOU CAN BE **SURE** ..IF IT'S **Westinghouse**



HALF-MILLION VOLT "TRAFFIC COP"

Power engineers, with the cooperation of Westinghouse, are now testing out a great new "electrical superhighway". Along it race 500,000 volts—almost *twice* the voltage carried by any transmission line today.

It may well change the whole geography of power in the U.S.A., by developing ways to transmit large amounts of power more efficiently and economically than ever before.

You have to be *sure* when you deal with

big power at 500,000 volts. That's why Westinghouse was called on to design and build not only this half-million volt lightning arrester, but the world's highest-voltage power transformers and other vital equipment.

This kind of confidence is the reason your local power company depends on Westinghouse, too, for much of the equipment that supplies and protects power for your home or factory.



MAKER OF THE BROADEST LINE OF ELECTRICAL EQUIPMENT

FORTUNE

JANUARY 1949

