

# The Line Material Co.

South Milwaukee WI



William Kyle Sr.

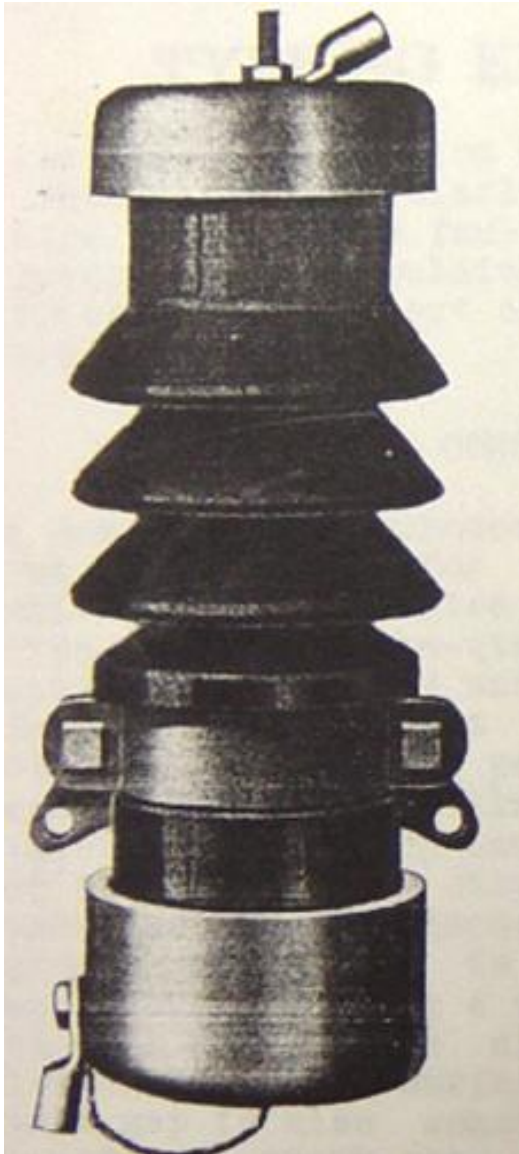
- **Started in 1911 by William Kyle Sr. and Lem Hendee**
- **The business focused on street lighting, distribution system insulators, and hardware for first 10 years**
- **First Fuse Patent in 1922**
- **First Circuit Breaker Patent in 1926**
- **First Arrester Patent 1928**



In 1911 WD Kyle Sr. Founded the Line Material Company in Milwaukee Wisconsin



# First Line Material Co. Arrester



- Introduced in 1928
- Patented in 1930 to Alwin Steinmayer the Chief Engineer of Line Material
- Was an Expulsion Arrester
- Produced in Milwaukee at Central Plant
- 12 inches tall
- Ratings of 4.4kV, 6.6kV, 7.5kV, 11kV, and 13.2 kV



A G Steinmayer



May 13, 1930.

A. G. STEINMAYER

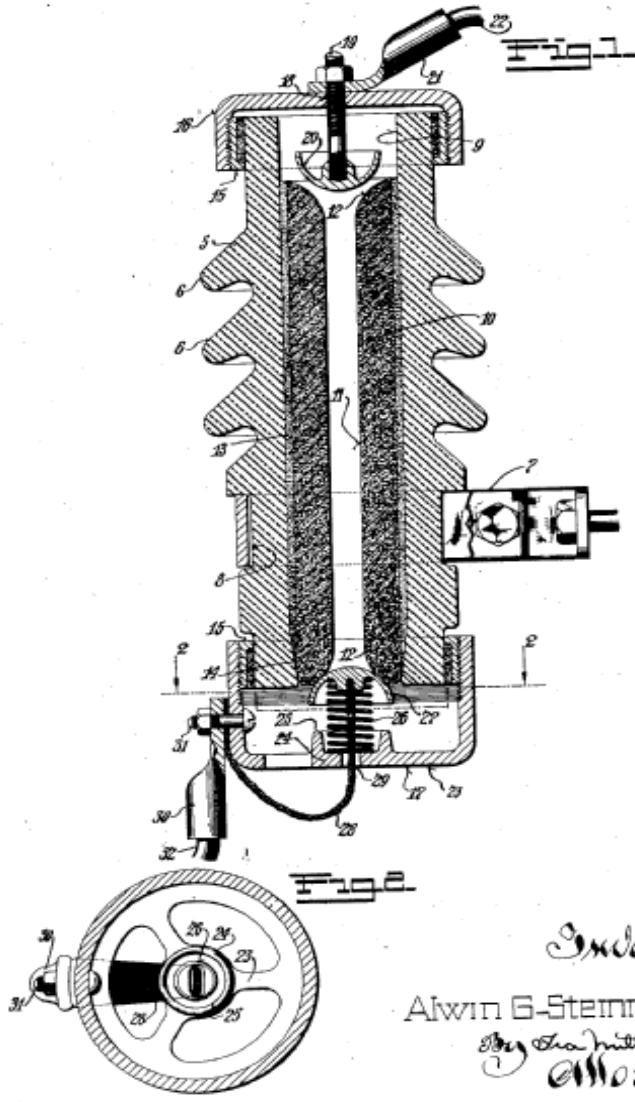
1,758,181

LIGHTNING ARRESTER

Filed May 10, 1928

2 Sheets-Sheet 1

# Features



- A very important feature of this arrester was that it need not be inspected every day as was the case for many arresters in 1928
- Also the leakage current was very low being about  $\frac{1}{2}$  amp.

*Inventor*

Alwin G. Steinmayer

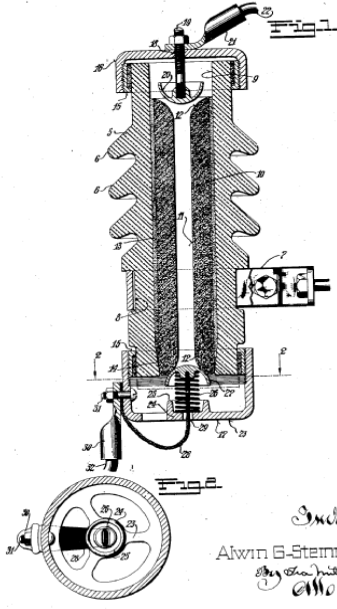
*By Charles H. Miller, Jr.  
Attorney*



May 13, 1930.

A. G. STEINMAYER  
LIGHTNING ARRESTER  
Filed May 10, 1928 2 Sheets-Sheet 1

1,758,181

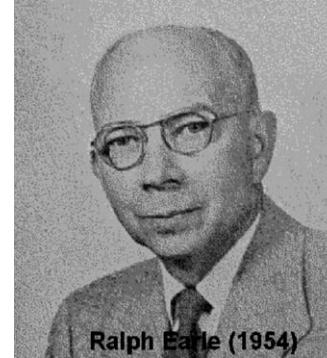


**AG Steinmayer**  
1917 - 1955

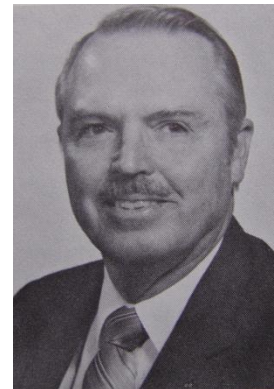


**Herman Stoelting**

**Arrester Designers over the years at Line Material, McGraw Edison and Cooper**



**Ralph Earle**



**Stanley Kershaw**  
1951- 1995

**Charles Clinkenbeard**

1954- 1990

